

Program Additions and Changes

This sheet contains last minute changes to the floor plan on the reverse to accommodate changes dictated by the Fire Marshal's Office, and late additions to the bourse and participating organizations, and other information of interest to STAMPEXPO 400 visitors.

If you need further information, please visit the STAMPEXPO 400 reception area in booths 156-158.

ADDITIONAL DEALERS

- 247 *George C Gibbs Post Cards*
Postcards
- 57 *Penn Valley Stamps,*
U.S., worldwide stamps
- 22 *Rising Sun Stamps*
Japan & China stamps, covers
- 21 *University Stamp Co., Inc.*
U.S. stamps
- 21 *Ventura Stamp Co.*
U.S. Stamps

CLUBS, SOCIETIES & ASSOCIATIONS

- 126 *Albany County Convention & Visitors Bureau* (WWW.ALBANY.ORG)
- 127 *Explore New York 400* (WWW.EXPLORENY400.COM)
- 125 *Hudson River Valley Green Way* (WWW.HUDSONGREENWAY.STATE.NY.US)
- 125 *Hudson River Valley National Heritage Area* (WWW.HUDSONRIVERVALLEY.COM)
- 116 *The Philatelic Foundation* (WWW.PHILATELICFOUNDATION.ORG)

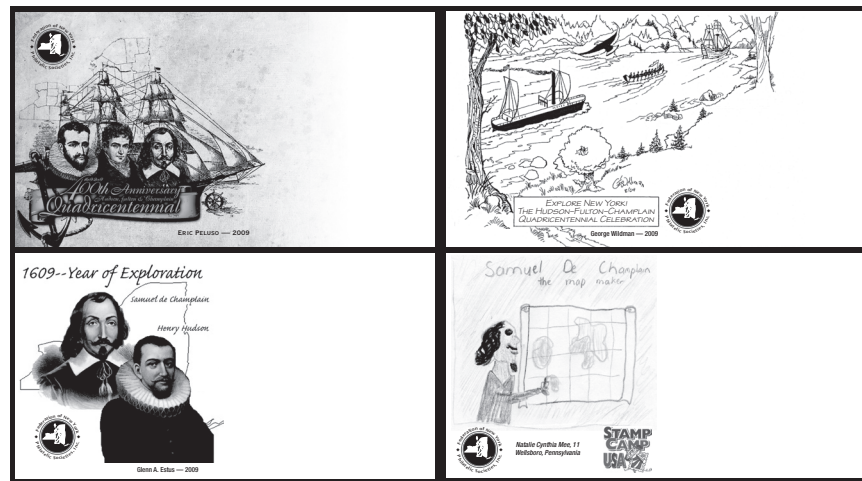
SHOW SCHEDULE

FRIDAY, SEPTEMBER 25

- 10-11 a.m. The Capital Brass ensemble will be performing during the opening ceremony at the Empire State Plaza reflecting pool

SATURDAY, SEPTEMBER 26

- 6-7 p.m. Folksingers Steve Suffett and Anne Price will be performing during the social hour preceding the Awards Banquet in the Albany Room.



SHOW CACHETS

A set of four designs have been selected by the show committee from the cachet contest entries — three from the adult submissions and one youth entry. Individual covers serviced with one of the three different pictorial postmarks for each day of the show are \$2 each. A set of all four covers for any given day is \$8, while a complete set of 12 covers for all three days of the show is \$24. Individual covers and sets are available at the show, but may be ordered by mail from Show Treasurer Ronald K. Ratchford, 1105 Union Street, Schenectady, NY 12308-2805. Make checks and money orders payable to STAMPEXPO 400 and include 50 cents mailing for up to four covers and \$1.50 mailing for the set of 12.

The top adult vote getter, top left, was created by Eric Peluso of West Hemstead, NY, a graphic designer and member of the AFDCS. Also selected were a pen and ink drawing by George Wildman of Hamden, CT, a cartoonist and illustrator, top right, and the entry of Glenn A. Estus of Westport, NY, Vermont Philatelic Society president, The Vermont Philatelist editor, North Country Stamp Club of Plattsburgh, NY president, and Stamp Insider first day columnist, bottom left.

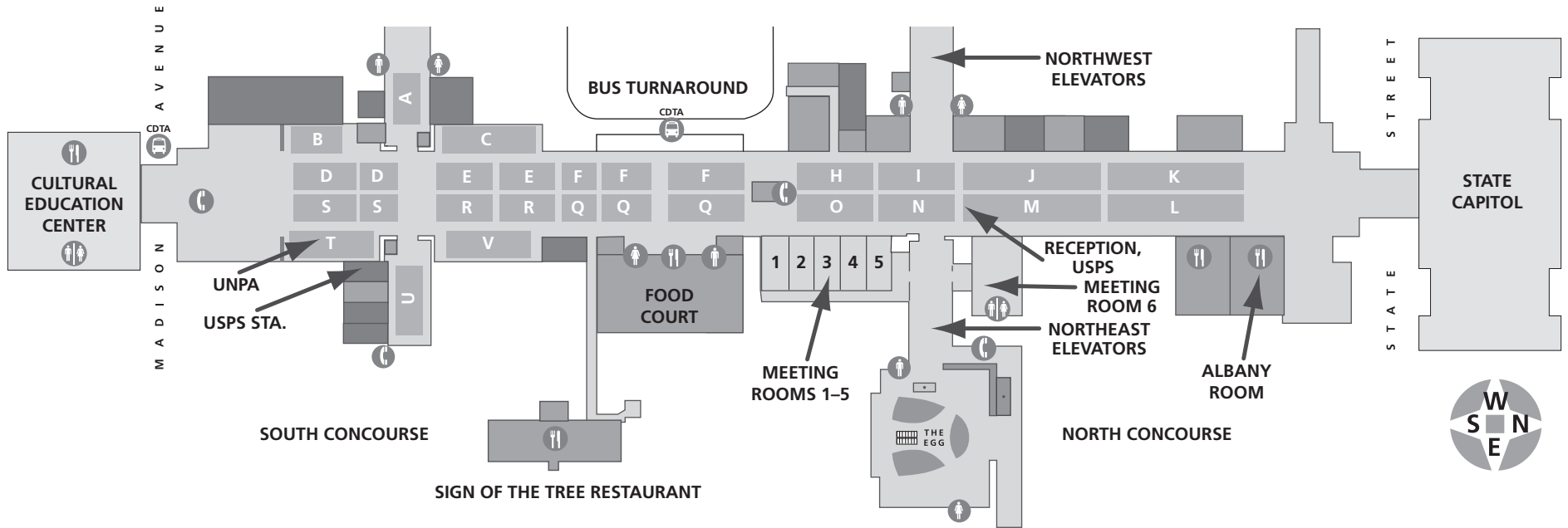
The youth winner, bottom right, was chosen from among two dozen entries submitted by Stamp Camp USA. The drawing of Samuel de Champlain was made by Natalie Cynthia Mee, 11, a pupil at the Rock L. Butler Middle School in Wellsboro, PA.

There are three pictorial postmark. Henry Hudson will be honored on Friday, September 25, 2009; Robert Fulton on Saturday, September 26, 2009, and Samuel de Champlain on Sunday, September 27, 2009. Each postmark features a simplified version of the ExploreNY logo designed by the state for the quadricentennial celebration. The 4 in the 400 is a highly stylized representation of a sail. The killer bars in the postmarks are in the form of waves and “cancel” the logo. Interspersed are the name of the daily honoree, Quadricentennial Station, the date, and the Albany address.





EMPIRE STATE PLAZA CONCOURSE



KEY

- A** SHOW SECTIONS; THERE ARE NO SECTIONS G AND P
- CREATURE COMFORT — FOOD AND RESTROOMS
- TELEPHONE AND CDTA BUS SERVICE

BREAKDOWN OF BOOTHS BY SECTION

A: 1-7, **B:** 8-17, **C:** 18-26, **D:** 27-38, **E:** 39-44, **F:** 45-61, **H:** 74-75;
I: 76-93, **J:** 94-111, **K:** 112-126, **L:** 127-141, **M:** 142-159, **N:** 160-177,
O: 178-179, **Q:** 192-208, **R:** 209-214, **S:** 215-226, **T:** 227-233,
U: 234-243, **V:** 244-252

RECEPTION

STAMP EXPO 400 RECEPTION IS IN BOOTHS 156-158, SECTION M

